

SECTION A [16 marks]

You will hear two examples of music, selected from the Baroque, Classical or Romantic periods or the Twentieth Century.

Each extract will be played **four** times, with a pause between each playing.

Music A1

You will hear an extract for voices. The words (some of which are repeated) are printed below. Read through questions **1** to **4**.

Section 1:

*In beauty may I walk
All day long may I walk
Through the returning seasons
May I walk*

Section 2:

*Beautifully joyful
Beautifully will I possess again*

1 (a) Which of the following best describes the melodic shape of the opening line?

- ☐ A descending step then movement mostly by leap
- ☐ A descending step then movement mostly by step
- ☐ An ascending step then movement mostly by leap
- ☐ An ascending step then movement mostly by step

[1]

(b) Name the texture of the music for this line.

.....

[1]

(c) How is it used in Section 1?

.....

..... [1]

2 What melodic device is used when the words 'through the returning seasons' are sung?

..... [1]

3 Describe **two** ways in which Section 2 contrasts with Section 1.

.....

.....

..... [2]

4 (a) When was this music written?

- ☐ Baroque
- ☐ Classical
- ☐ Romantic
- ☐ Twentieth Century

[1]

(b) Give a reason for your answer.

.....

..... [1]

Music A2

You will hear an extract for instruments. Look at the skeleton score below and read through questions 5 to 8.

1 2 3 4 5 6 7

8 9 10 11 12 13 14

15 16 17 18 19 20

Device? Extract continues...

- 5 Name the compositional device used in bars 15–16.

.....

[1]

- 6 Which of the following best represents the structure of the recorded extract? The printed music is section A.

- ☐ AAABB
- ☐ AABBA
- ☐ AABCA
- ☐ AABCB

[1]

- 7 (a) Which of the following is this extract an example of?

- ☐ Canon
- ☐ March
- ☐ Minuet
- ☐ Waltz

[1]

(b) Give **three** reasons for your answer.

.....

.....

.....

..... [3]

8 (a) When was this music written?

- ☐ Baroque
- ☐ Classical
- ☐ Romantic
- ☐ Twentieth Century

[1]

(b) Who composed it?

- ☐ Bach
- ☐ Bartók
- ☐ Haydn
- ☐ Tchaikovsky

[1]

SECTION B [22 marks]

You will hear three extracts of music from around the world. Each extract will be played **four** times, with a pause between each playing.

Music B1

You will hear an extract for instruments. Look at the skeleton score below and read through questions 9 to 11.

(Introduction)

1 $\text{♩} = 136$ 2 3 4 5 6 7 8 9 10

Instrument?

11 12 13 14 15 16

Instrument?

17 18 19 20 21 22

- 9 (a) What instrument joins towards the end of the introduction (during bar 7)?

..... [1]

- (b) How is the sound produced on this instrument?

..... [1]

- 10 Name the instrument that plays the printed melody.

..... [1]

- 11 (a) Where does this music come from?

..... [1]

- (b) Give **two** reasons for your answer.

.....

.....

..... [2]

Music B2

You will hear an extract for voices and instruments. Read through questions **12** to **13**.

- 12** Describe the music heard during the three different parts of the extract. [5]

First Solo Voice

.....

.....

.....

Second Solo Voice

.....

.....

.....

Group of Voices

.....

.....

.....

- 13** Where does this music come from?

.....

[1]

Music B3 (World Focus: Indian Music)

You will hear an extract of folk music from Rajasthan. Read through questions **14** to **16**.

- 14** The extract begins with a kamāichā. Describe in detail the construction of this instrument and how it is played.

.....

.....

.....

.....

..... [4]

- 15** Describe the music of this extract, commenting on features which are typical of Rajasthani folk music.

.....

.....

.....

.....

..... [4]

- 16** Suggest **two** occasions or venues where these musicians might perform.

.....

.....

..... [2]

BLANK PAGE

Music C1

17 Suggest a suitable **Italian** tempo marking for this music.

..... [1]

[3]

..... [2]

..... [2]

..... [1]

..... [1]

(c) Which of the following is played by the bassoon during these bars?

- ☐ Alberti bass
- ☐ Melisma
- ☐ Pedal
- ☐ Sequence

[1]

22 Name the structure of the extract and give the bar numbers of each section.

.....

.....

.....

..... [3]

23 (a) When was this music written?

- ☐ Baroque
- ☐ Classical
- ☐ Romantic
- ☐ Twentieth Century

[1]

(b) Who composed it?

- ☐ Bach
- ☐ Chopin
- ☐ Glass
- ☐ Mozart

[1]

SECTION D [16 marks]

Set Work

Answer all the questions on **one** set work:

either Haydn: *Symphony No. 100* (questions **24** to **28**)

or Brahms: *Academic Festival Overture* (questions **29** to **36**).

Haydn: *Symphony No. 100*

You will hear two extracts. Each extract will be played **twice**, with a pause between each playing.

Music D1

Look at the skeleton score, which you will find in the separate insert, and read through questions **24** to **25**.

- 24 (a)** Describe **two** contrasts between the Trio (heard here) and the Minuet (before the recorded extract).

.....

.....

..... [2]

- (b)** What features of the music are the same as the Minuet?

.....

.....

..... [2]

- 25 (a)** What features could be seen as 'Military' in bars 12–16¹?

.....

..... [1]

- (b)** Describe the texture of the music in these bars.

.....

..... [2]

- (c)** What is the key of the music in these bars?

..... [1]

Music D2

Look at the skeleton score, which you will find in the separate insert, and read through questions **26** to **28**.

- 26 (a)** What section of the movement is this extract from?

.....

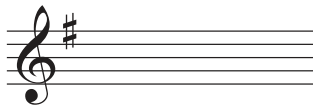
[1]

- (b)** From where (earlier in the movement) has Haydn taken the material in bars 1–7?

.....

[1]

- 27** On the staff below, write the bracketed notes in the viola part in the middle of bar 23 in the treble clef.



[2]

- 28 (a)** Explain the enharmonic change at bar 50.

.....

 [2]

- (b)** Why do the brass not play for much of this extract?

.....

 [2]

Brahms: Academic Festival Overture

You will hear two extracts. Each extract will be played **twice**, with a pause between each playing.

Music D3

Look at the skeleton score, which you will find in the separate insert, and read through questions 29 to 32.

29 Describe the accompaniment to the melody in bars 1–8.

.....

.....

..... [2]

30 Describe the music of bars 18²–22.

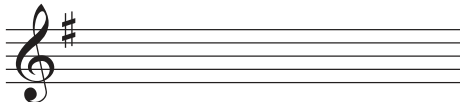
.....

.....

.....

..... [3]

31 On the staff below, write the first two notes of the viola part in bar 25 in the treble clef.



[2]

32 What is the name of the song which the music in this extract is based on?

..... [1]

Music D4

Look at the skeleton score, which you will find in the separate insert, and read through questions **33** to **36**.

- 33** Explain how the music from bars 1–6 is different from when the equivalent passage was first played in the movement (before the recorded extract).

.....

.....

.....

..... [3]

- 34** Comment on the metre of the music in bars 7–10.

.....

.....

..... [2]

- 35** What do the bass instruments play in bars 14–23?

- ☐ Alberti bass
- ☐ Dominant pedal
- ☐ Tonic pedal
- ☐ Walking bass

[1]

- 36** Why did Brahms write this piece?

.....

.....

..... [2]

BLANK PAGE

Permission to reproduce items where third-party owned material protected by copyright is included has been sought and cleared where possible. Every reasonable effort has been made by the publisher (UCLES) to trace copyright holders, but if any items requiring clearance have unwittingly been included, the publisher will be pleased to make amends at the earliest possible opportunity.

To avoid the issue of disclosure of answer-related information to candidates, all copyright acknowledgements are reproduced online in the Cambridge Assessment International Education Copyright Acknowledgements Booklet. This is produced for each series of examinations and is freely available to download at www.cambridgeinternational.org after the live examination series.

Cambridge Assessment International Education is part of Cambridge Assessment. Cambridge Assessment is the brand name of the University of Cambridge Local Examinations Syndicate (UCLES), which is a department of the University of Cambridge.